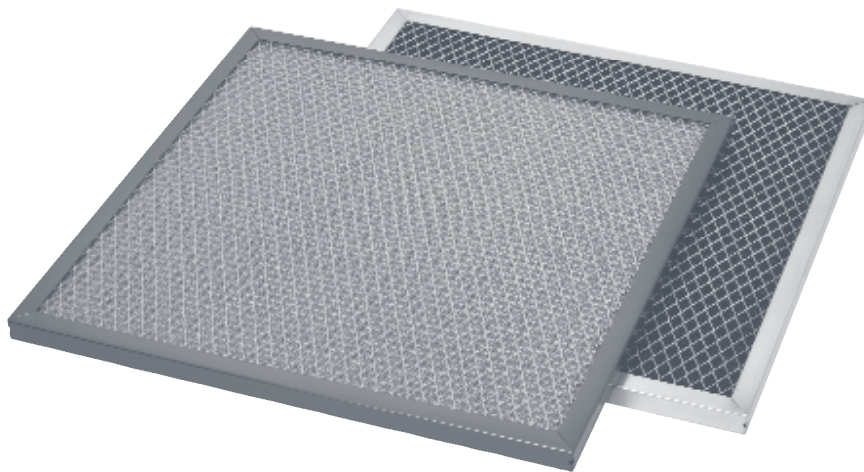


E1 SERIES

ELECTROSTATIC FILTER



FILTERS AIRBORNE PARTICULATE



Application: The **E1 SERIES ELECTROSTATIC FILTER** uses static electricity to extract airborne contaminants from the airstream, and is designed to replace disposable air filters commonly used in residential, commercial and industrial HVAC applications. Just like walking across certain carpets creates a “shock”, the woven polypropylene media generates an electrostatic charge as air passes over it, and airborne pollutants such as dust, pollen, mold, bacteria and lint particles are held in place until washed away. Corner drain holes prevent water and detergent from pooling when cleaning and, therefore, facilitate faster drying time. Select from two grades to obtain the best filter for your application.

Construction: The E1 Series is available in **Premier** (E1P) and **Supreme** (E1S) grades. An aluminum frame is used to enclose the media pack, which consists of a filter core placed between two layers of woven polypropylene media. The pack is then placed between two expanded aluminum grids, and is made to fit firmly inside the frame giving the filter exceptional strength and durability. The frame is made with mitered corners and is secured with pop rivet(s).

The **Premier** grade has a 5 year limited warranty and contains a filter foam core. The filter frame is anodized in accordance with military specifications (MIL-SPECS) to provide additional corrosion resistance.

The **Supreme** grade has a 90 day limited warranty and contains an air-laid polyester core. The filter frame is made of mill-finished aluminum.

Due to continuing research and development, we reserve the right to make modifications to any product.

AVAILABLE IN ONE ALLOY

E1P

PREMIER GRADE ~
Anodized Aluminum

E1S

SUPREME GRADE ~
Mill-Finish Aluminum

PRODUCT HIGHLIGHTS

- Filters with Static Electricity
- 3-Phase Media Pack
- Greater Efficiency
- Washable and Reusable
- Corner Drain Holes

FAST FACTS

LEAD TIME:

5 Days

MINIMUM ORDER:

No Minimum Order

SIZING OPTIONS:

Standard and Special Sizes

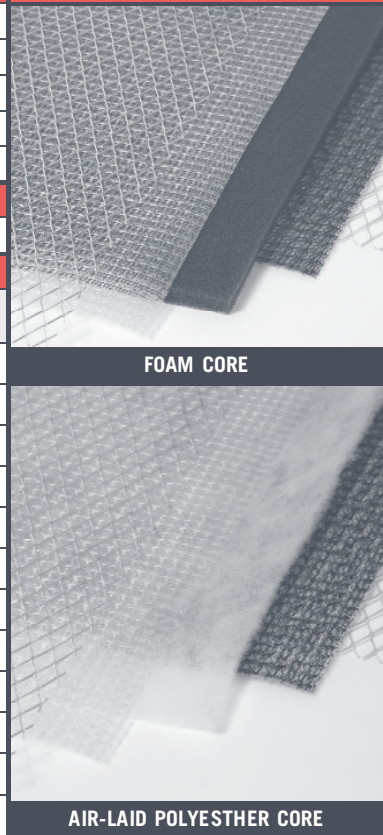
Please see reverse side for details.

CLASSIFICATION:

UL 900 Class 2

E1 SERIES ~ Filter Selection Chart

MODEL	E1 Premier			E1 Supreme		
CONSTRUCTION						
Frame Alloy	.030" anodized aluminum			.030" mill-finish aluminum		
Frame Thickness	1/2" exact; nominal* 1" and 2"			1/2" exact; nominal* 1" and 2"		
Electrostatic Media	Polypropylene			Polypropylene		
Filter Core	Filter foam			Air-laid polyester		
Support Grid	Expanded aluminum			Expanded aluminum		
APPLICATION						
Application	Airborne particulate			Airborne particulate		
STANDARD SIZES						
Nominal* Dimensions (H x W x T)	Part Number	Carton Quantity	Carton Weight	Part Number	Carton Quantity	Carton Weight
12 x 24 x 1	E1P101224	12	14.0	E1S101224	12	13.0
16 x 20 x 1	E1P101620	12	15.0	E1S101620	12	14.0
16 x 25 x 1	E1P101625	12	18.0	E1S101625	12	16.0
20 x 20 x 1	E1P102020	12	18.0	E1S102020	12	16.0
20 x 25 x 1	E1P102025	12	22.0	E1S102025	12	19.0
24 x 24 x 1	E1P102424	12	24.0	E1S102424	12	21.0
12 x 24 x 2	E1P201224	12	17.0	E1S201224	12	16.0
16 x 20 x 2	E1P201620	6	9.0	E1S201620	6	9.0
16 x 25 x 2	E1P201625	6	11.0	E1S201625	6	10.0
20 x 20 x 2	E1P202020	6	11.0	E1S202020	6	10.0
20 x 25 x 2	E1P202025	6	13.0	E1S202025	6	12.0
24 x 24 x 2	E1P202424	6	15.0	E1S202424	6	13.0



FOAM CORE

AIR-LAID POLYESTHER CORE

E1 SERIES NOTES

SIZING INFORMATION

- * What does Nominal mean? Standard size filters are of a nominal dimension. This means the height, width and thickness dimensions are undercut by a certain amount. See below for the exact amount of undercut for each dimension.
- 1. Six standard nominal size filters are available in thicknesses of nominal 1" (actual 7/8") and nominal 2" (actual 1-3/4") and are 1/2" undercut on the height and width dimensions.
- 2. Special size filters are available in thicknesses of 1/2" exact, nominal 1" (actual 7/8") and nominal 2" (actual 1-3/4"). These filters must be purchased using the exact height, width and thickness dimensions to eliminate any confusion when ordering.
Link: www.amfco.com/linkshvac/howto/specialsizes
- 3. Tolerance height and width: ± 1/8"
- 4. Tolerance thickness: ± 1/32"

CLASSIFICATION AND TEST NOTES

- 1. The E1 Series filter is listed as UL 900 Class 2.
- 2. Recommended final resistance is 0.5" W.G.

FILTER CLEANING AND COATING

- 1. To clean a dirty filter, rinse it with a moderate-to-heavy stream of warm water in the opposite direction of the air flow. Presoaking the filter in a solution of warm water and mild detergent prior to rinsing is acceptable. High-powered steam cleaning or chemical dips are unnecessary and not recommended.

INSTALLATION CONSIDERATIONS

- 1. The E1 Series filter may be installed in HVAC systems vertically or horizontally.
- 2. DO NOT place the Premier filter in direct sunlight or ultraviolet light because this will degrade the filter foam.

ADDITIONAL INFORMATION

- 1. The 1/2" exact filter uses an .025" thick aluminum frame.
- 2. The 1/2" exact filter is 5-ply and contains a 1/4" thick core.
- 3. The nominal 1" (actual 7/8") filter is 5-ply and contains a 1/2" thick core.
- 4. The nominal 2" (actual 1-3/4) filter is 7-ply and contains a 1-1/2" thick core.

